

B&C COOLSTAR /WOMEN - FW 752

B&C
COLLECTION

ENGINEERED FLEECE

B&C
COLLECTION

OUTER WEAR /UNIT



- Lightweight ergonomic full zip micro-fleece
- Maximum insulation for a minimum weight and compact design
- Double-side brushed for softness and featuring a supersoft, thermally efficient fleece
- Its light weight provides high flexibility to wear it as a jacket or as extra insulation layer, for outdoor or indoor
- Full front reverse zip fastener with zip pull
- Chin protector
- 2 front pockets with reverse zip fastening and zip pull
- Feminine cut
- Chest seams for waisted form
- Set-in sleeves
- Open hem and open cuffs
- Ergonomic arm and elbow sleeve shape for freedom of movement and comfort

DU♂
BLACK

DU♂
NAVY

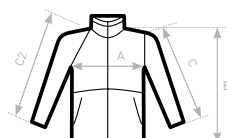
DU♂
STEEL GREY

- 100% anti-pilling polyester micro-fleece (144 filaments)
- 170 g/m²
- XS - S - M - L - XL - 2XL
- 5 pcs/pack & 15 pcs/carton



DU♂
CONCEPT

with B&C Coolstar /men



C2= RAGLAN

SIZES [CM]

B&C COOLSTAR /WOMEN FW 752

| | XS | S | M | L | XL | 2XL | 3XL |
|-----------------|------|------|------|------|------|------|-----|
| A HALF CHEST | 43,5 | 46,5 | 49,5 | 52,5 | 56,5 | 60,5 | - |
| B BODY LENGTH | 62,5 | 63 | 64 | 66 | 67 | 69,5 | - |
| C SLEEVE LENGTH | 61 | 62 | 63 | 64 | 65,5 | 67 | - |